

PLAN 973	\$39,900.00
PLAN 823	\$40,900.00
PLAN 827	\$41,900.00
PLAN 974	\$41,900.00
PLAN 824	\$42,900.00
PLAN 954	\$46,450.00

ABOVE PRICES INCLUDE: *DISHWASHER*

- * Full Insulation * Fireplace * Shake Roof * Range, Oven, Hood with Light and Fan * Food Disposer * Wall-to-Wall Carpeting * Tiled Entry * Textolite Kitchen Counter Top
- * Acoustical Ceiling * Back Line Fencing * Membership in Pool and Cabana Club * Much, much more

AVAILABLE OPTIONS:

- * Dishwasher * 2nd Fireplace * Upgrade Carpet * Upgrade Linoleum * Air Conditioning

BACK IN 1974, this was the brochure advertising homes for sale in what would become Ridgeview Gardens. "Valley View" was named for developer F. Wayne Valley, founder of the Oakland Raiders of the NFL.

WHAT PRICES! Ridgeview homeowner Ross Eyre, a salesman for Valley View in 1974, says it was hard selling the first homes. "It was a dog on the market!" he said. Eventually, all the homes sold -- and it seems prices have risen since then.



Plan 954—The Valley Squire

1928 square feet, 4 bedrooms, 3 baths, 2 stories

For those who love and need space, living and family living. The spacious here it is. There are 4 large bedrooms, family room and living room have been including a very private and extra-spacious master bedroom downstairs. It's separated to form two distinctive activity areas. A large, double car garage has plenty of storage space and room for a laundry area with 220 wiring. This luxurious home provides you with all the space you'll ever require for many years to come.



Plan 827—The Valley Pointe

1592 square feet, 3 bedrooms, 2 baths

is hard to imagine a more delightful down off the entry foyer is the sunken living room. At the opposite side of the home and a step down from the dining area is the sunken family room. This makes the two entertainment centers "poles apart."



TOP OF THE LINE. The Valley Squire, Model 954, was priced at \$46,450 in 1974.

THE VALLEY POINTE, Model 827 ,cost \$41,900.



Plan 823—The Valley View
1520 square feet, 3 bedrooms, 2 baths

After you have counted the special features and luxury touches of this home you will expect the price to be beyond your budget. But that isn't so. Here is attainable luxury. The long family room with cathedral ceiling is splendid expanse for "gatherings of the clan." As you amble down the long central hallway, pause and admire the formal sunken living room. In the "just right" bedroom wing, note the size and careful placement of the closets, and the dressing area in the master bedroom suite. The bathrooms, with cultured marble vanities, ceramic tile and linoleum floors are another delight. All in all, this home is ideal for every growing family.



THE VALLEY VIEW, Model 823, was priced at \$40,900.

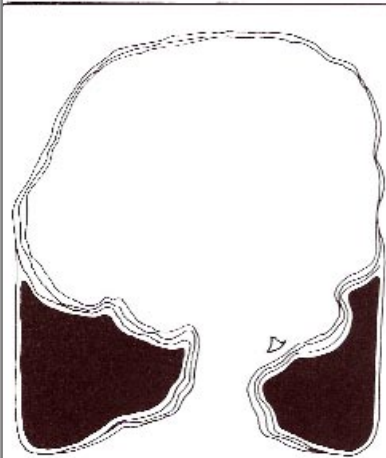


Plan 824—The Valley Ridge
1657 square feet, 4 bedrooms, 2 baths

Here's an all-occasion home; an every-convenience-design, with luxury touches to gladden any heart. To mention a few conveniences, observe the recessed entry for added weather protection, look into the big double garage with its storage area. Your need for formal space finds classic expression in the



THE VALLEY RIDGE, Model 824, went for \$42,900.



The OAKS IN BENNETT VALLEY

Singer . . . Unmatched Excellence

The name Singer commands great respect in the home building industry. There is a simple reason for it: The Singer Housing Company stands for quality and for value.

The name Singer has, of course, been a household word in America for more than a hundred years; a trusted firm with an enviable reputation for excellence. Singer's entry into the building industry some years ago has only served to enhance the company's reputation.

The quality and value of homes and other types of housing built by Singer are unmatched in the industry. It's part of a long tradition that demands unmatched excellence.

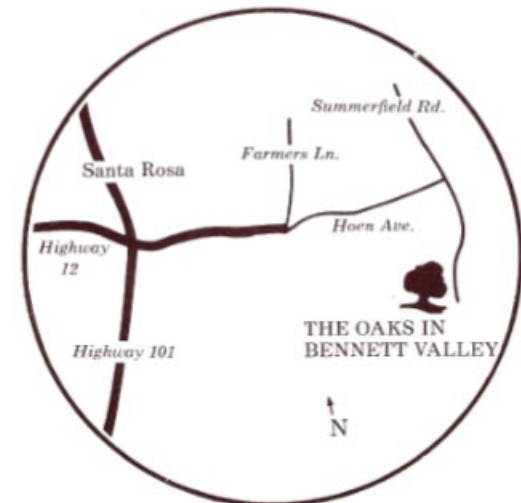
Each year, the Singer Housing Company builds thousands of homes across the country. In Northern California alone, Singer has built nearly 30,000 homes.

When you buy a Singer home you are assured of all the luxury and convenience today's home-building technology can offer — attractive, well-constructed, durable homes at the lowest possible prices.

The Singer tradition would have it no other way.

FANCIER NAME. *The neighborhood was later called The Oaks in Bennett Valley. A few lots had towering oaks but nearly all have disappeared. Developer F. Wayne Valley's Besco Co. had become part of Singer Housing Co. -- an offshoot of the Singer Sewing Machine Co.*

Directions: Highway 101 north to Santa Rosa. From Highway 12 drive east on Hoen Avenue to Summerfield Road. Turn right on Summerfield and continue to our model home entrance. Phone (707) 539-7042



(Not to scale)

Due to Singer Housing Company's established research and development program, we reserve the right to alter price, product or design, and information in this brochure pertaining thereto, without notice or obligation.

otpoint



Singer Housing Company
Besco Division



EQUAL HOUSING
OPPORTUNITY